

# REGIONAL RISK ASSESSMENT

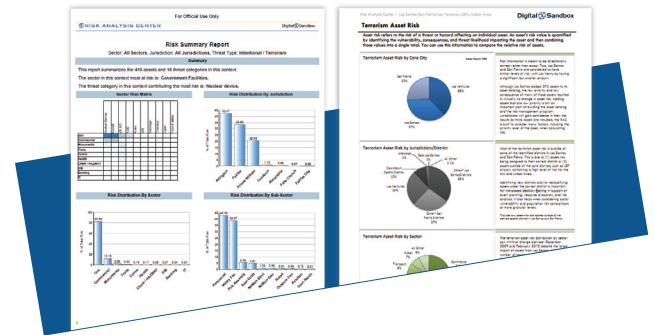


*Fusion Centers have the unique ability to integrate national intelligence with local, regional, and statewide information and, using the results of that integration, develop timely and actionable intelligence products for their customers. This fusion process, however, requires that the threat information they gather is framed within the context of the fusion center's geographic area of responsibility. This context is best provided through comprehensive risk assessments of a region's CIKR and population makeup.*

*Fusion Centers are now mandated to either perform regional risk assessments independently, or contribute to those in process through regional agencies.*

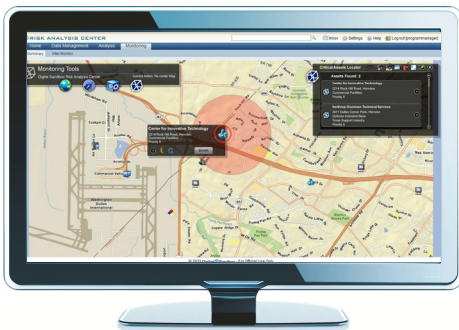
## Digital Sandbox's Total Risk Assessment Solution

Digital Sandbox is the leading provider of risk management solutions for UASIs, States, and Fusion Centers, and has developed an unparalleled system for collecting and analyzing CIKR, threat, vulnerability, and consequence data, to determine a region's risk. The Risk Analysis Center (RAC) software platform is consistent with DHS and NSI best practices, addresses NIEM and PCII standards, and incorporates Digital Sandbox's proven, patented methodology and tools for comprehensive jurisdictional risk management. Additionally, the RAC provides an ability to manage dynamic threat ratings, enabling users to directly correlate changes in threat likelihoods to jurisdictions, events, and infrastructure -- creating an accurate, constantly evolving risk picture for the region.



*Digital Sandbox's RAC can produce multiple views of its regional risk assessments.*

## The Risk Analysis Center



*The RAC automatically integrates asset information with its risk data and presents it geospatially for further analysis.*

Digital Sandbox's RAC enables Fusion Centers to address all aspects of regional risk assessments, through a single, integrated application.

- **Cataloging and Assessing Critical Assets:** Comprehensive templates encourage users to collect key data on assets that will feed into the risk assessment, including photos, lat/longs, POCs, dimensions, vulnerabilities, and more.
- **Interactive Threat Monitor (ITM):** The RAC's ITM provides Fusion Centers with the capability to adjust local threat likeli-

hoods based on their own subject matter expertise and threat intelligence. Threat analysts are able to leverage their unique perspectives on their own region's risk picture to refine the accuracy of the likelihood of a particular threat scenario, when necessary.

- **Incorporating Population Data:** The RAC can be configured with regional population data, enabling the combination of asset risk and population risk for a total risk picture.
- **Risk Reports:** The RAC automatically generates a wide range of risk reports based on its built-in analytics and risk data entered into the system. Users can also generate customized reports, based on unique asset groups, threat information, and more.

*The RAC's Mobile Monitor links directly to the region's asset data collection, enabling users to access data in the field and conduct site vulnerability assessments.*



*Digital Sandbox's Risk Analysis Center is a software platform for multiple risk management solutions and strategies for the public safety community, enabling customers to collect, analyze, quantify, prioritize risk data; adjust threat likelihoods; and aggregate and prioritize threat information. The RAC Mobile Monitor is a specialized application of the RAC.*